

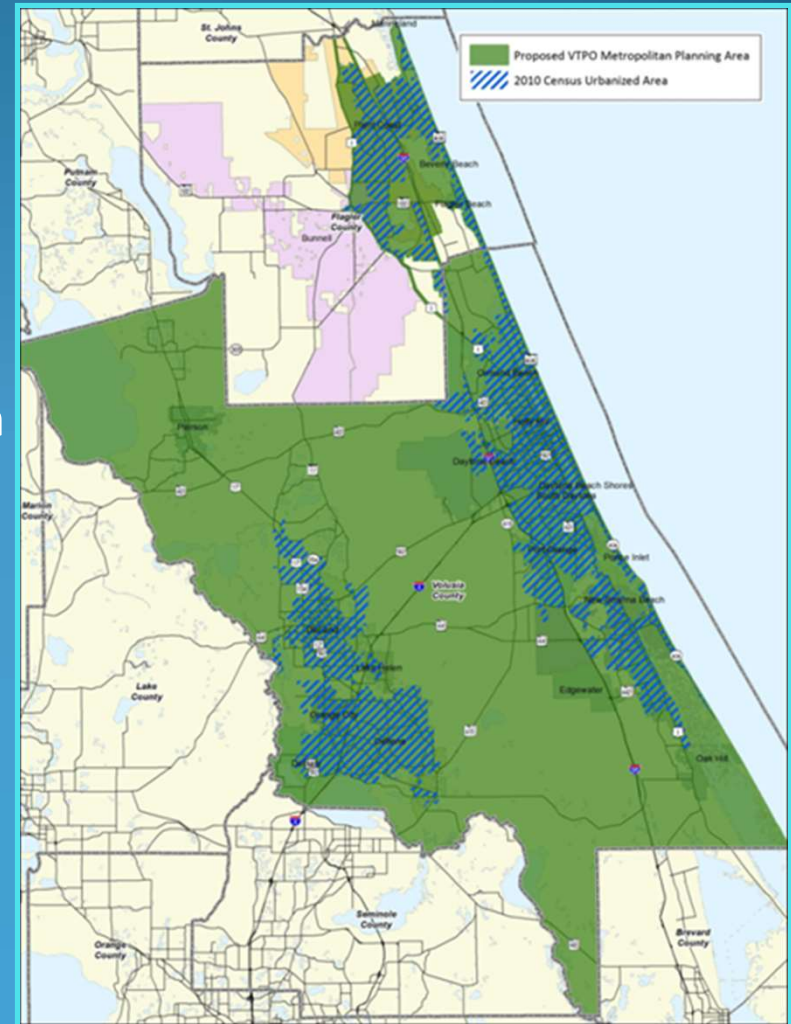
# The River to Sea Transportation Planning Organization



Presentation for the  
**SR 44 Business Reach-Out Meeting**  
August 22, 2019

# Role of the River to Sea TPO

- Required by federal and state law for urbanized areas with a population greater than 50,000
- Ensures that expenditures of public funds for transportation are based on a continuing, cooperative and comprehensive planning process
- Provides local input in the prioritization of transportation projects utilizing state and federal funding

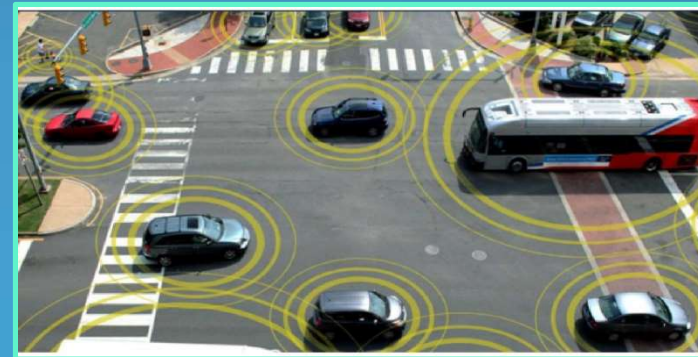
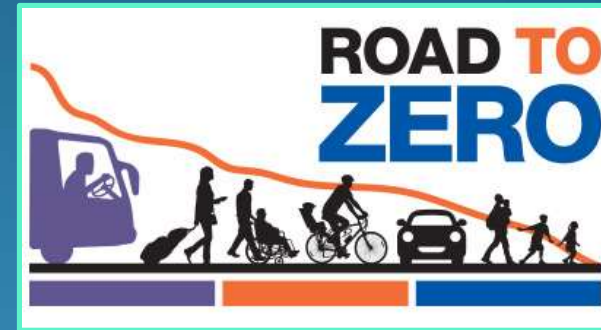


# Planning Activities

- **Long Range Transportation Plan**
  - 25 Year Plan - Updated Every 5 Years
- **Transportation Improvement Program (TIP)**
  - 5 Year Document – List of Project Priorities Developed Annually
- **Planning Studies**
  - Regional Trail, Resiliency, Central Florida Tourism, Freight Parking, Technology Master Plan, Crash Analysis, Community Safety Action Plan
- **Project Feasibility Studies**
  - SR 44 Corridor Study, Fire Station 52, SR 44 Trail

# Current Areas of Focus

- **Annual Call for Projects**  
(Local Projects that may be Funded with state or federal funds)
- **Improving Safety in Transportation**  
(Five E's of Safety – Education, Encouragement, Enforcement, Evaluation, Engineering)
- **Advanced Transportation Technology**  
(Automated, Connected, Electric & Shared - ACES)
- **Transportation System Resiliency**  
(Sea Level Rise, Storm Events, Rainfall, Evacuation)
- **Developing the 2045 Long Range Plan**  
(Establishes Vision, Sets Funding Allocation)

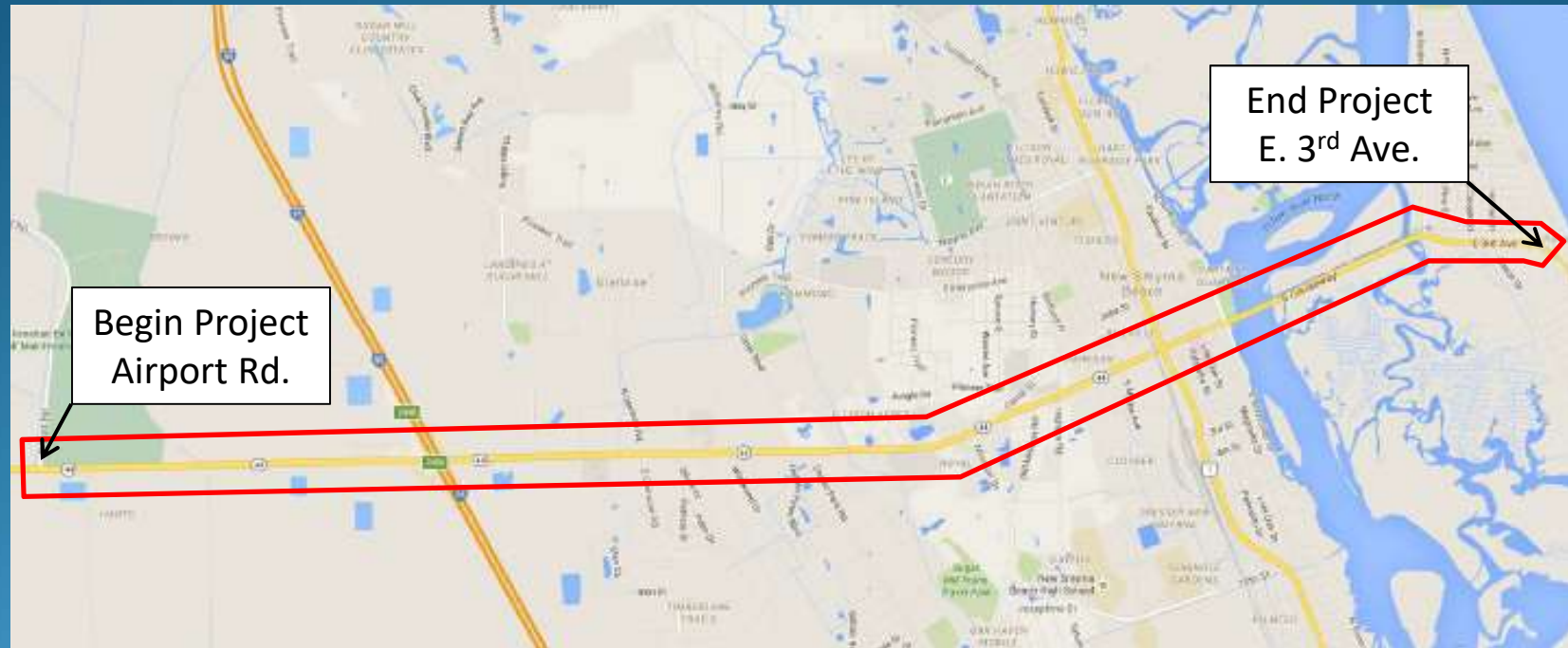


# Projects of Interest

- SR 44 Landscaping Beautification Grant - Programmed
- SR 44 Traffic Operations Corridor Improvements - Programmed
- SR 44 at Palmetto Turn Lane Modification- Programmed
- Fire Station 52 – Emergency Traffic Signal – Awaiting Feasibility Study
- SR 44 Trail – Awaiting Feasibility Study
- SR 44 Adaptive Traffic Control System - Programmed
- I-95 at SR 44 Interchange - Programmed
- SR 44 at Mission/Wallace/Canal – Awaiting Funding
- Williamson Boulevard Extension - Conceptual



# SR 44 Adaptive Signal System



- **Funded for Construction in FY 2019/20**
- **Adaptive Signal Control Technology**
  - Adapts to Real Time Traffic Conditions
  - Reduces Congestion and Improves Travel Time Reliability
  - Provides Safety and Environmental Benefits

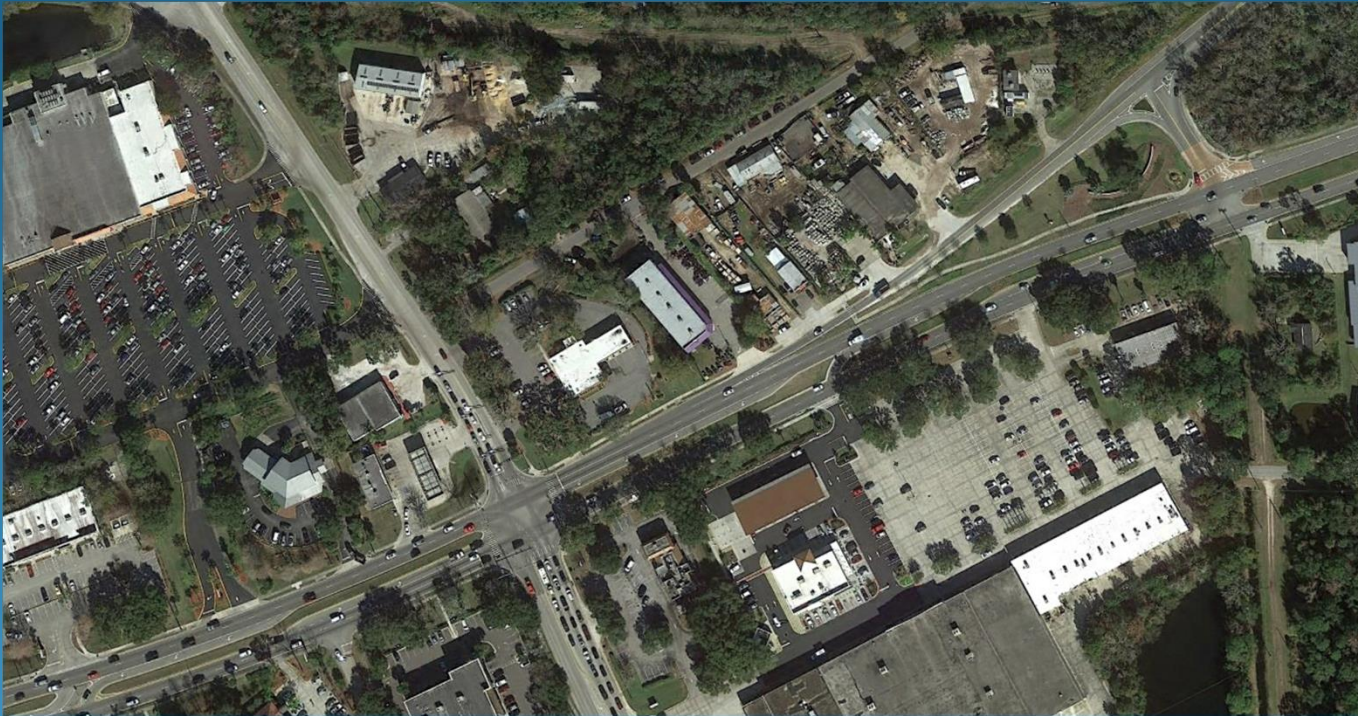
# I-95 at SR 44 Interchange



- **Funded for Design in FY 2019/20 and Construction in FY 2020/21**
- **Improve Safety and Operations**
  - Widen SR 44 EB to accommodate an auxiliary lane through the interchange
  - Add additional LT Lane for I-95 NB Off-Ramp
  - Add WB deceleration lane for I-95 NB On-Ramp



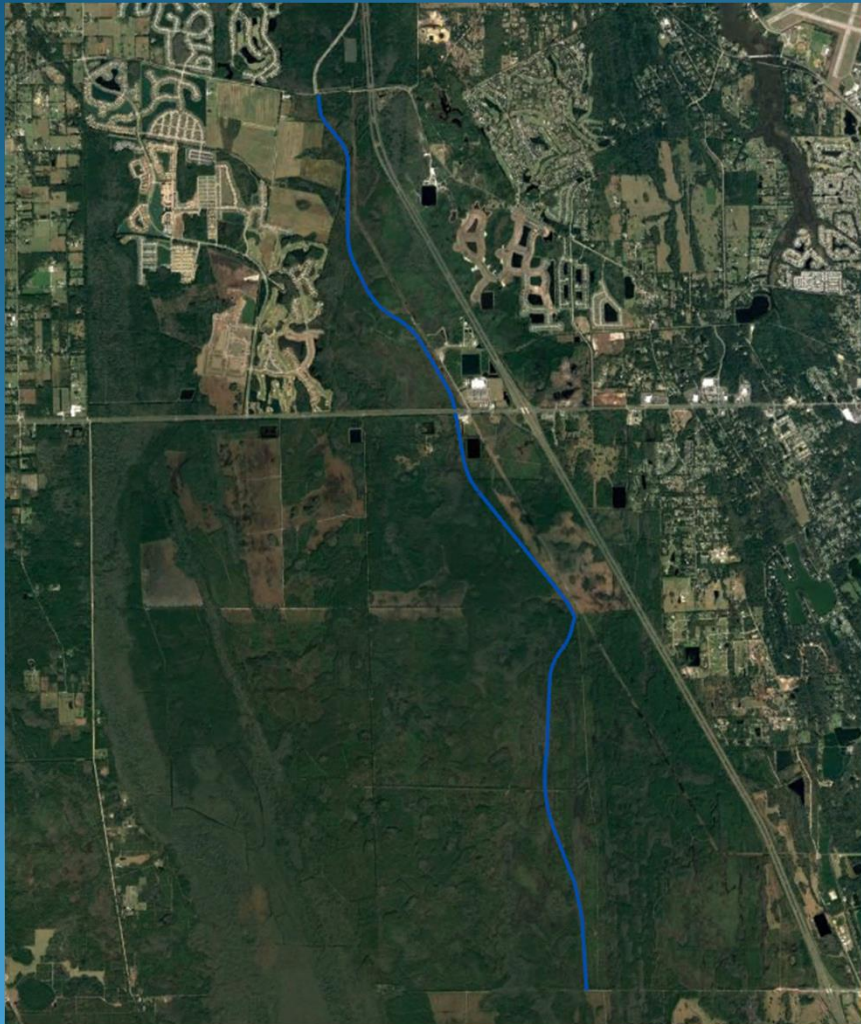
# SR 44 at Mission/Wallace/Canal



- Project Currently Awaiting Funding
- Recommended Improvements
- At Canal Street
  - Install Traffic Signal
  - Extend EB LT Lane
  - Add SB RT Lane and
  - Convert SB LTR Turn Lane to SB LT Lane
- At Mission/Wallace
  - Add EB RT Lane at Mission/Wallace
  - Extend EB LT Lane
  - Extend Inside NB LT Lane
  - Add RT Lane into Circle K (WB)
  - Convert current Merge Lane from WB
  - Canal to RT Only Lane
- Add/Upgrade Signage



# Williamson Boulevard Extension



- Conceptual Alignment
- Requires coordination between Agencies
- Requires coordination between developments

# Thank-You

Colleen Nicoulin, AICP, RSP  
Senior Transportation Planner/Project Manager  
River to Sea Transportation Planning Organization  
2570 W. International Speedway Blvd., Suite 100  
Daytona Beach, FL 32114  
Phone: 386-226-0422  
E-Mail: [cnicoulin@r2ctpo.org](mailto:cnicoulin@r2ctpo.org)  
[www.r2ctpo.org](http://www.r2ctpo.org)

