



DENSITY STUDY

- RAILROAD
- LOCAL ROAD
- OTHER PARCEL
- ISBA
- WATER
- WITHIN VACANT PARCELS**
- UPLANDS
- WETLANDS
- VACANT PARCEL



February 2019

TOTAL ACREAGE OF DEVELOPED PARCELS: 11,317 ACRES

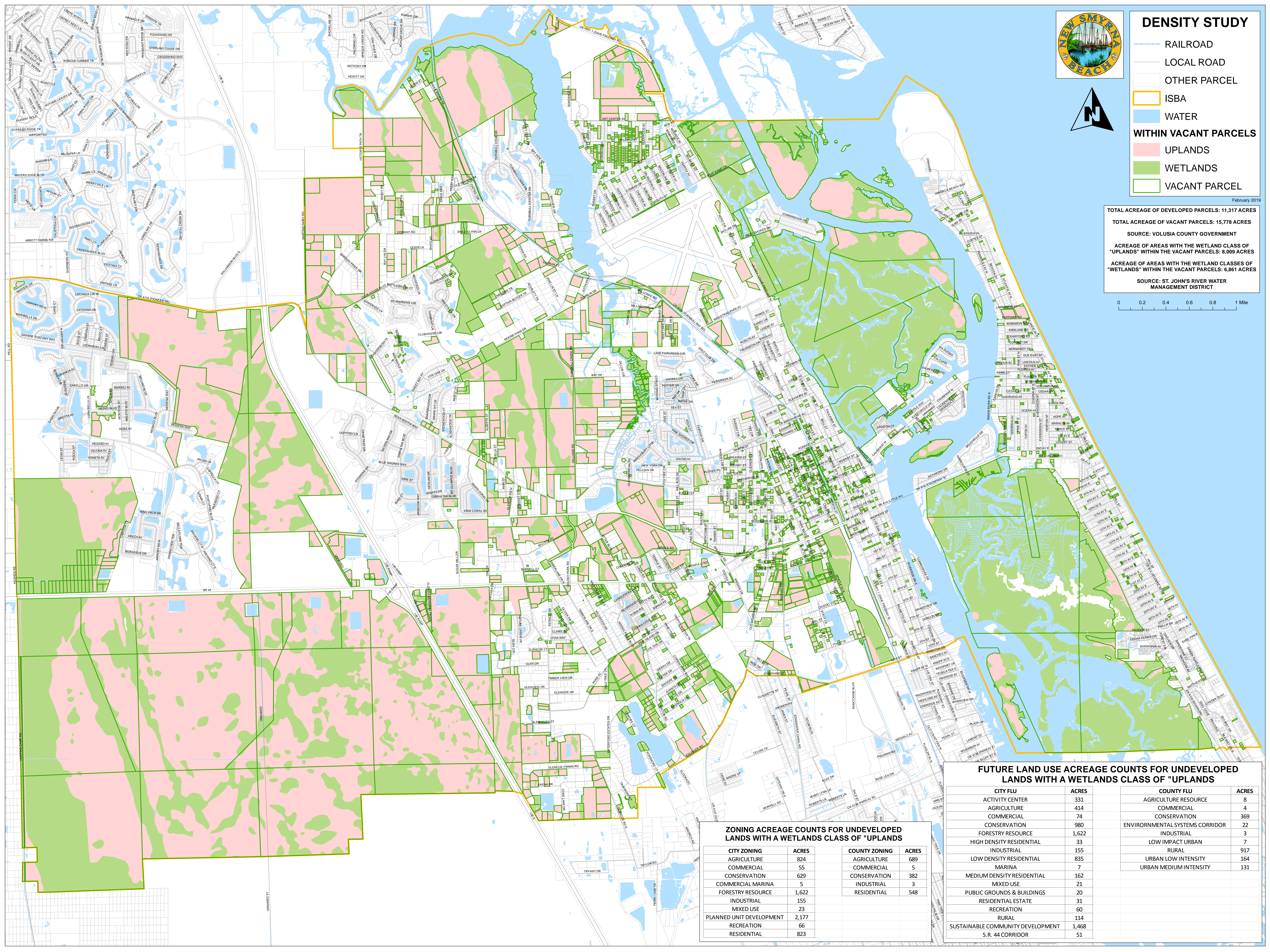
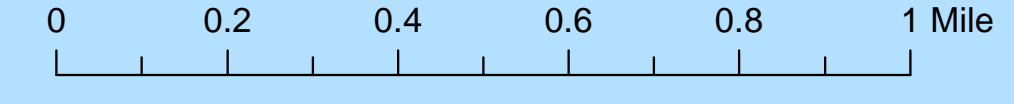
TOTAL ACREAGE OF VACANT PARCELS: 15,778 ACRES

SOURCE: VOLUSIA COUNTY GOVERNMENT

ACREAGE OF AREAS WITH THE WETLAND CLASS OF "UPLANDS" WITHIN THE VACANT PARCELS: 8,009 ACRES

ACREAGE OF AREAS WITH THE WETLAND CLASSES OF "WETLANDS" WITHIN THE VACANT PARCELS: 6,861 ACRES

SOURCE: ST. JOHN'S RIVER WATER MANAGEMENT DISTRICT



ZONING ACREAGE COUNTS FOR UNDEVELOPED LANDS WITH A WETLANDS CLASS OF "UPLANDS"

CITY ZONING	ACRES	COUNTY ZONING	ACRES
AGRICULTURE	824	AGRICULTURE	689
COMMERCIAL	55	COMMERCIAL	5
CONSERVATION	629	CONSERVATION	382
COMMERCIAL MARINA	5	INDUSTRIAL	3
FORESTRY RESOURCE	1,622	RESIDENTIAL	548
INDUSTRIAL	155		
MIXED USE	23		
PLANNED UNIT DEVELOPMENT	2,177		
RECREATION	66		
RESIDENTIAL	823		

FUTURE LAND USE ACREAGE COUNTS FOR UNDEVELOPED LANDS WITH A WETLANDS CLASS OF "UPLANDS"

CITY FLU	ACRES	COUNTY FLU	ACRES
ACTIVITY CENTER	331	AGRICULTURE RESOURCE	8
AGRICULTURE	414	COMMERCIAL	4
COMMERCIAL	74	CONSERVATION	369
CONSERVATION	980	ENVIRONMENTAL SYSTEMS CORRIDOR	22
FORESTRY RESOURCE	1,622	INDUSTRIAL	3
HIGH DENSITY RESIDENTIAL	33	LOW IMPACT URBAN	7
INDUSTRIAL	155	RURAL	917
LOW DENSITY RESIDENTIAL	835	URBAN LOW INTENSITY	164
MARINA	7	URBAN MEDIUM INTENSITY	131
MEDIUM DENSITY RESIDENTIAL	162		
MIXED USE	21		
PUBLIC GROUNDS & BUILDINGS	20		
RESIDENTIAL ESTATE	31		
RECREATION	60		
RURAL	114		
SUSTAINABLE COMMUNITY DEVELOPMENT	1,468		
S.R. 44 CORRIDOR	51		